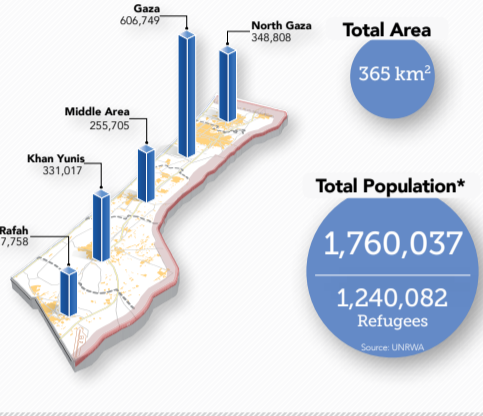




GAZA STRIP KEY FACTS

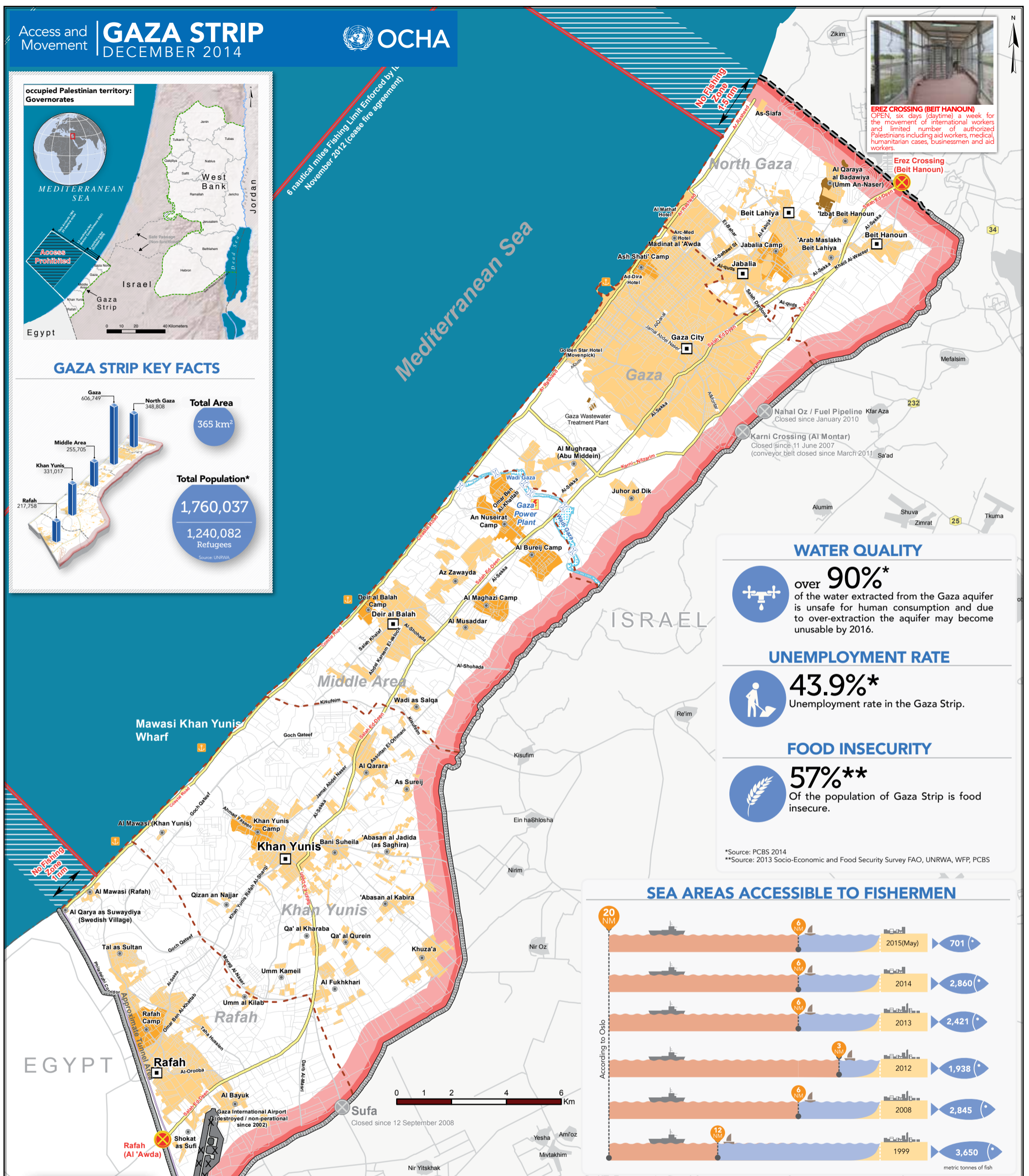


6 nautical miles Fishing Limit Enforced by 14 November 2012 (cease fire agreement)

Mediterranean Sea



EREZ CROSSING (BEIT HANOUN)
OPEN, six days (daytime) a week for the movement of international workers and limited number of authorized Palestinians including aid workers, medical humanitarian cases, businessmen and aid workers.



WATER QUALITY

over 90%*
of the water extracted from the Gaza aquifer is unsafe for human consumption and due to over-extraction the aquifer may become unusable by 2016.

UNEMPLOYMENT RATE

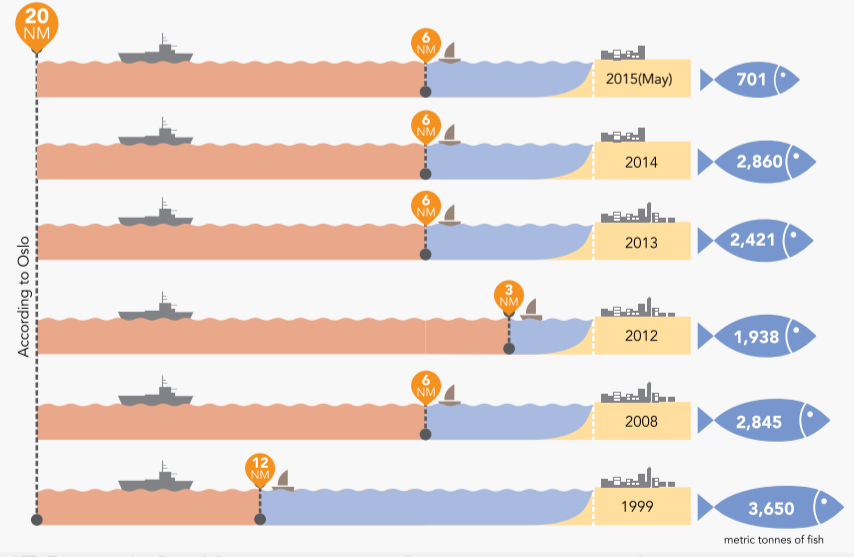
43.9%*
Unemployment rate in the Gaza Strip.

FOOD INSECURITY

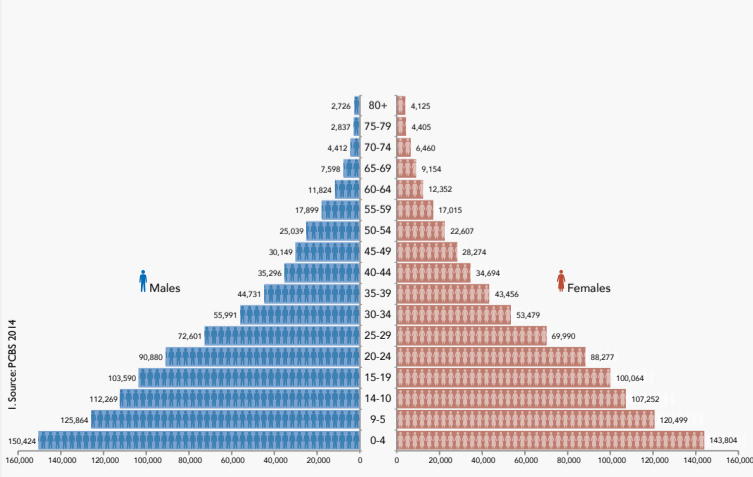
57%**
Of the population of Gaza Strip is food insecure.

*Source: PCBS 2014
**Source: 2013 Socio-Economic and Food Security Survey FAO, UNRWA, WFP, PCBS

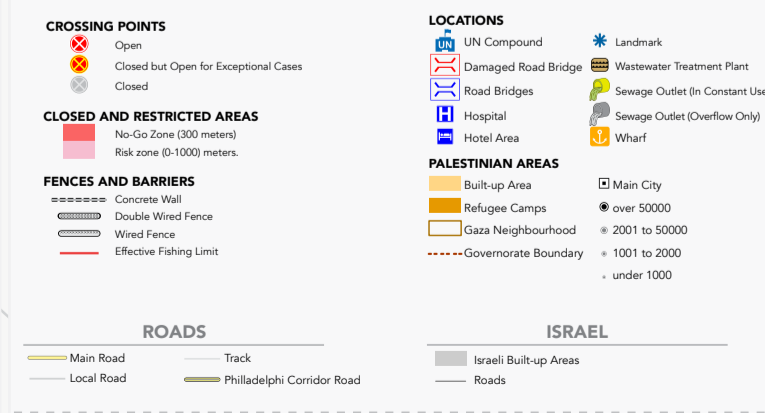
SEA AREAS ACCESSIBLE TO FISHERMEN



GAZA STRIP GOVERNORATE POPULATION AND AGE DISTRIBUTION*



ACCESS AND PHYSICAL CLOSURES



RAFAH (AL'AWDA)
Intermittently partially open on a daily basis from 9:00am-3:00pm for emergency evacuations, including foreign nationals and war injured. Entry of authorized Palestinians and other nationals is allowed as well as urgent humanitarian goods.



KEREM SHALOM (KARM ABU SALEM)
OPEN, five days (day time) a week for movement of authorized goods only.

The designations employed and the presentation of material on this map do not imply the expression of any opinion whatsoever on the part of the secretariat of the United Nations concerning the legal status of any country, territory, city or area or of its authorities, or concerning the delimitation of its frontiers or boundaries. Reproduction and/or use of this material is only permitted with express reference to "United Nations OCHA oPt" as the source.