



UNRWA is committed to providing quality, inclusive and equitable education in Syria promoting the use of COVID-19 preventive measures in all of its schools. © 2020 UNRWA Photo by Taghrid Mohammad

syria regional crisis emergency appeal 2021

Protracted displacement, deteriorating socio-economic conditions aggravated by the consequences of the COVID-19 pandemic, dire humanitarian needs and protection concerns continue to affect the lives of Palestine refugees in Syria, Lebanon and Jordan.

In Syria, the protracted conflict has devastated human security and left 91 per cent of the 438,000¹ Palestine refugees estimated to remain in the country in absolute poverty² and 40 per cent displaced. In 2020, living conditions deteriorated further as a result of an economic crisis, leading to an increase in prices including of the most basic commodities.

In Lebanon and Jordan, Palestine refugees, including Palestinian refugees from Syria (PRS), are also confronted with increased hardship and vulnerability, due to long-term displacement and difficult socio-economic conditions, coupled with the consequences of the COVID-19 pandemic. In Lebanon, the economic and political crisis, which started in October 2019, continues to cause rising inflation, price increases and loss of employment opportunities, pushing more people into poverty.

In 2021, UNRWA requires US\$ 318 million to respond to the humanitarian needs of Palestine refugees in Syria, Lebanon and Jordan. The Agency's humanitarian response will be guided by the following three strategic priorities:

Strategic Priority 1: Preserve resilience through the provision of humanitarian assistance, ensuring that the most vulnerable refugees meet their basic needs.

Strategic Priority 2: Contribute to a protective environment for Palestine refugees by maintaining access to basic services including health; education; livelihoods; protection; and water, sanitation and hygiene (WASH).

Strategic Priority 3: Improve the effectiveness and efficiency of emergency programme delivery through safety and security, repair and maintenance of UNRWA installations and regional capacity and management support.

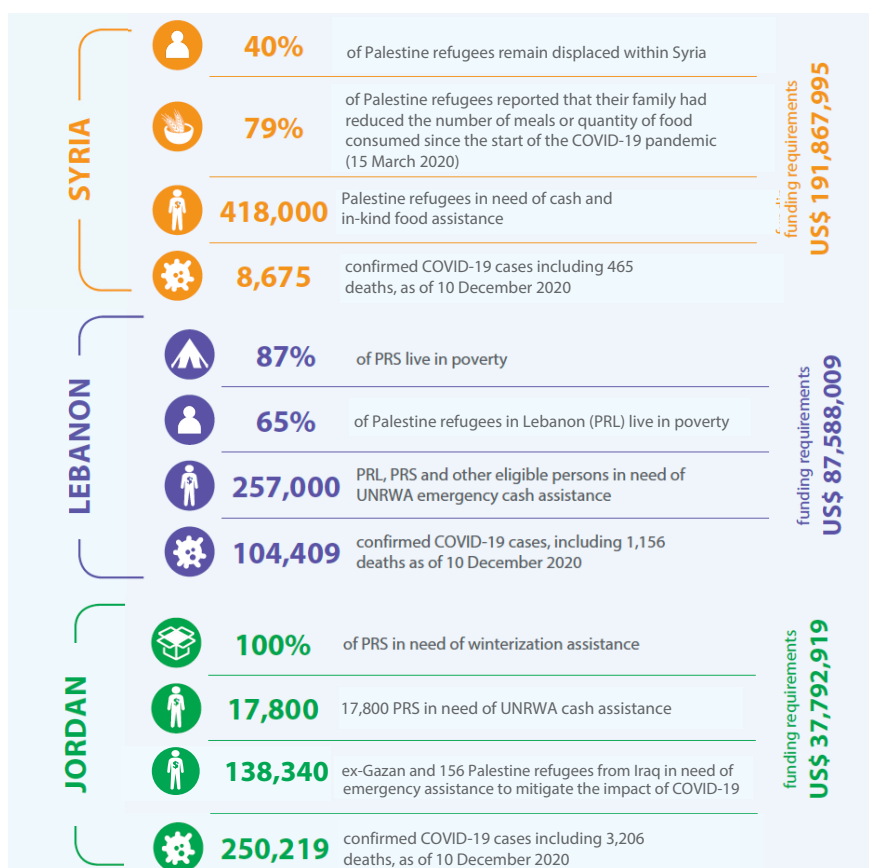
Throughout this appeal, UNRWA will continue to adjust its operations to respond to the challenges created by COVID-19, ensuring the continuity of critical basic services for Palestine refugees.

¹ As compared to 653,726 persons registered with UNRWA in Syria as of Q3 2020. For the purpose of this document, the term Palestine refugees refers to: registered Palestine refugees, other registered persons refers to those who are eligible to receive goods and services.

² UNRWA Socio-Economic Assessment of Living Conditions of Palestine Refugees in Syria. n.d. December 2017.

syria regional crisis emergency appeal 2021

Total funding requirements: US\$ 317,881,730³



UNRWA Emergency Interventions in Syria, Lebanon and Jordan in 2021

Cash Assistance	Emergency cash assistance to 418,000 Palestine refugees in Syria, 27,700 PRS in Lebanon, and 17,800 PRS in Jordan to meet a range of food and non-food needs. COVID-19 cash assistance to 257,000 Palestine refugees in Lebanon (PRL), PRS and other persons eligible for UNRWA assistance in Lebanon, and 138,000 "ex-Gazans" in Jordan. Winterization assistance to the most vulnerable Palestine refugees in Syria, all PRS in Jordan, and PRS and selected PRL in Lebanon.
Food Assistance	Food parcels distributed to 418,000 Palestine refugees in Syria to mitigate the impact of the economic crisis and the additional hardship created by COVID-19.
Shelter and NFIs	Basic relief items provided to 27,000 Palestine refugees in Syria affected by shock and emergencies. Support for shelter rehabilitation through a self-help approach for 500 Palestine refugee families in selected locations in Syria.
Health	Access to basic health care, and support to secondary and tertiary health for Palestine refugees in Syria and PRS in Lebanon and Jordan. Ensuring that essential health services remain available during COVID-19 through the implementation of specific measures and interventions.
Education in Emergencies	Ensuring continuity of learning of Palestine refugees, including PRS students, in UNRWA schools and TVET centres during COVID-19, through face-to-face, blended or fully remote learning modalities.
Livelihoods and Vocational Training	Short-term courses provided to 800 Palestine refugee youths in Syria. Formal and non-formal skills trainings provided to 440 Palestine refugees (PRL and PRS) in Lebanon.
Protection	Protection services available to Palestine refugees in Syria, Lebanon and Jordan including through remote modalities and dedicated helplines to address additional concerns created by COVID-19, with a special attention to Gender Based Violence (GBV) and child protection cases.
Environmental Health	WASH services provided in Palestine refugee camps in Syria, Lebanon and Jordan with increased prevention measures to avoid any additional health hazard during COVID-19.
Safety and Security	Ensuring the safety and security of staff and beneficiaries.
Repair and Maintenance of UNRWA Installations	Rehabilitation and maintenance of UNRWA installations in Syria and Lebanon, ensuring continued service provision.

³ This amount includes US\$ 632,807 for regional response requirements.



united nations relief and works agency
for palestine refugees in the near east

www.unrwa.org

UNRWA is a United Nations agency established by the General Assembly in 1949 and is mandated to provide assistance and protection to a population of some 5.7 million registered Palestine refugees. Its mission is to help Palestine refugees in Jordan, Lebanon, Syria, West Bank and the Gaza Strip to achieve their full potential in human development, pending a just solution to their plight. UNRWA services encompass education, health care, relief and social services, camp infrastructure and improvement, microfinance and emergency assistance. UNRWA is funded almost entirely by voluntary contributions.